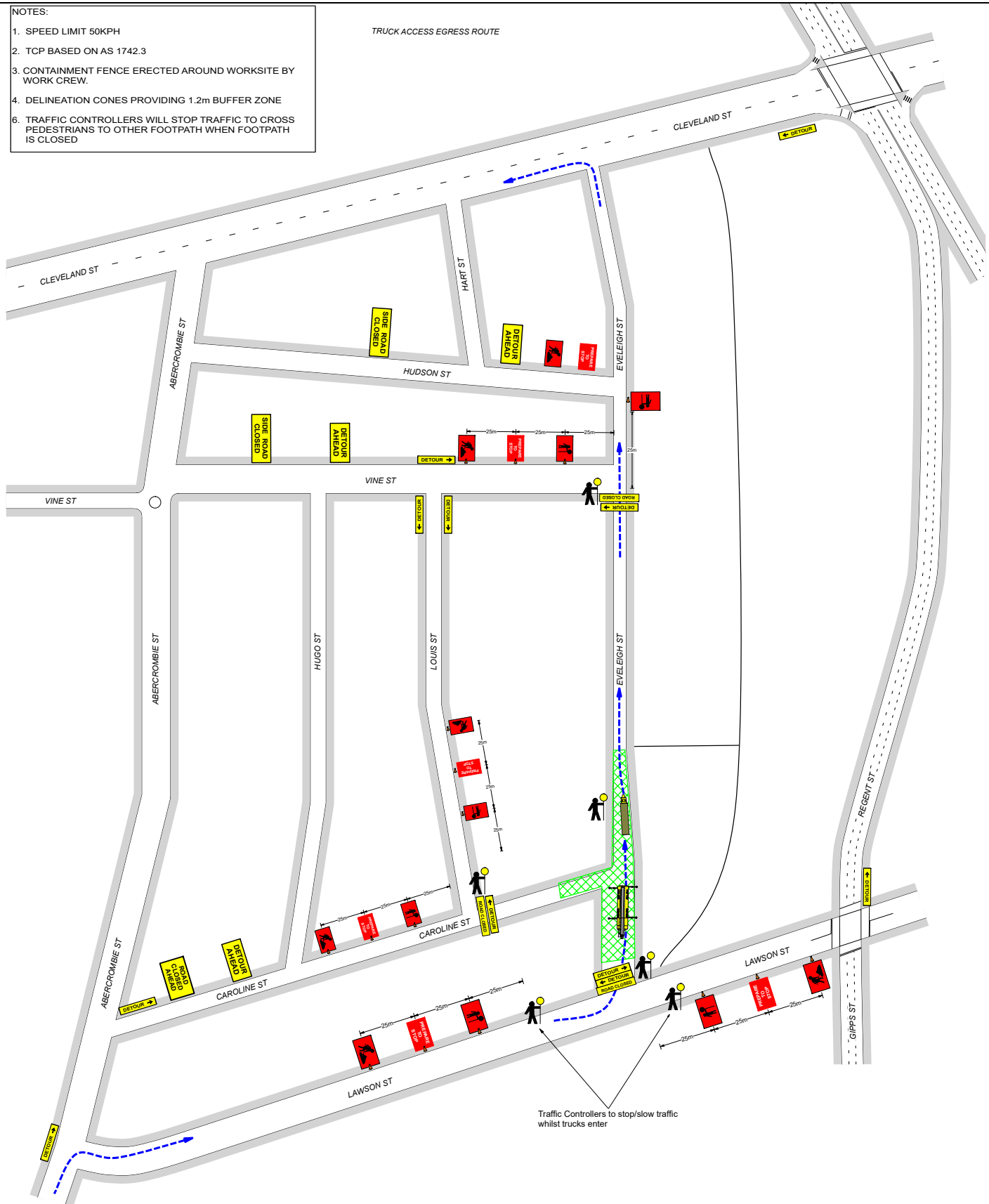


NOTES:

1. SPEED LIMIT 50KPH
2. TCP BASED ON AS 1742.3
3. CONTAINMENT FENCE ERECTED AROUND WORKSITE BY WORK CREW.
4. DELINEATION CONES PROVIDING 1.2m BUFFER ZONE
6. TRAFFIC CONTROLLERS WILL STOP TRAFFIC TO CROSS PEDESTRIANS TO OTHER FOOTPATH WHEN FOOTPATH IS CLOSED

TRUCK ACCESS EGRESS ROUTE



Traffic Controllers to stop/slow traffic whilst trucks enter

CONE SPACING		
PURPOSE/USAGE	APPROACH SPEED KPH	SPACING
ALL PURPOSES	≤50	4
CNTR LINE ON APPROACH TO A TRAFFIC CONTROLLER	All cases	4
SHOULDER OR PARKING LANE	51 - 70 > 70	18 24
SEPARATING OPPOSING TRAFFIC ON 2 LANE-2 WAY ROAD	51 - 70 > 70	12 18
SEPARATING OPPOSING TRAFFIC ON A MULTILANE UNDIVIDED ROAD	51 - 70 > 70	18 24
ADJACENT TO A CLOSED LANE ON A MULTILANE UNDIVIDED RD	51 - 70 > 70	9 12
MERGE TAPERS	51 - 70 > 70	12 18
WATER TAPERS	51 - 70 > 70	12 18



Date: 28/05/2019 Author: Martin French Project: RESOLUTION RIGGING/DEICORP
 Comments:
 Drawn: Martin French
 Orange Ticket No-0023047686
 EVELEIGH ST REDFERN DETOUR

Martin French

DRAWING NOT TO SCALE
 IF THIS TCP IS IMPLEMENTED BY A TRAFFIC CONTROL COMPANY OTHER THAN TTM,
 TTM BEARS NO LIABILITY FOR THE SET UP, OPERATION OF THE TCP.